



CHONG WOO

—
PRODUCT
CATALOGUE

2016

—
MINI AIRLESS BOTTLE
AIRLESS APPLICATOR
AIRLESS BOTTLE
AIRLESS TUBE

—
PROMOTION BOTTLE
DIP TUBE BOTTLE
GLASS BOTTLE
FOAM BOTTLE
ATOMIZER
DROPPER
CREAM JAR

—
PERFUME SPRAY PUMP
FINE MIST SPRAY PUMP
GEL SPRAY PUMP
MINI TRIGGER SPRAYER
LOTION PUMP
AIRLESS PUMP
DISPENSER
OIL PUMP
CLOSURE

ONE STOP SERVICE

CHONG WOO

PACKAGING
FOR
YOUR
NEEDS

| AIRLESS PUMP | CREAM PUMP | GEL SPRAY PUMP | FINE MIST SPRAY PUMP | PERFUME SPRAY PUMP | CLOSURE | DISPENSER |
| AIRLESS BOTTLE | BLOW BOTTLE | GLASS BOTTLE | DOUBLE LAYER | INJECTION BOTTLE | CREAM JAR |

ABOUT

CHONGWOO



CHONGWOO WEIHAI FACTORY. CHINA

The Manufacturer of Low Profile & Pre-Compressed Perfume Spray. Various Lock Dispenser, Fine Mist Spray with Pre-Compressed System. Various kinds of Closures for Plastic, Glass Bottle and Tube. Full Service for Top of your valuable Products. Design, Mold Building, Injection & Assembly. Improved Lead Time, Competitive Pricing & Custom-made Packaging. Chongwoo Co., Ltd, is global supplier of non-aerosol sprays and dispensing devices.

The primary markets served by Chongwoo are personal care products, fragrances, cosmetics, house hold goods and pharmaceuticals.

Chong woo manufactures and distributes its leading products of consumer goods to worldwide. Chong woo always arranges new item for customer satisfaction.



CHONGWOO WEIHAI SECOND FACTORY. CHINA



CHONGWOO SHANGHAI FACTORY. CHINA



CHONGWOO Hwasung FACTORY. KOREA



CHONGWOO INCHEON FACTORY. KOREA

HISTORY

1992
Distributor of Seaquist
dispensing & closure

1993
Distributor of SAR

1994
From Chong Woo Co →
Chong Woo Co., Ltd
Distributor of Emson

1997
Distributor of Valois

1998
Begin to Manufacturing
in Korea

1999
Own's factory
moving

2000
CW Package,
TOKYO OPEN

2005
SHANGHAI,
CHINA FACTORY OPEN

Chong Woo, America
(N.Y) OPEN

Weihai, China
Land purchased for 2nd
factory (16,500sqm)

2005
SHANGHAI,
CHINA FACTORY OPEN

Chong Woo, America
(N.Y) OPEN

Weihai, China
Land purchased for 2nd
factory (16,500sqm)

2006
ISO 9001

2009

ISO 14001

INNOBIZ(small and medium
business administration)

2012
Hwa Sung factory
opened

2014

Weihai factory
(china) opened

2015

Moved the company
to the Cheongna Int'l City factory

MAINBIZ(Management,
Innovation, Business)

CONTENTS

AIRLESS

CV

Mini Airless



CV_19
Mini Airless Bottle



CV_23
Mini Airless Bottle



CVE
Mini Airless Bottle



CVE-R
Mini Airless Bottle



CVE-R2
Mini Airless Bottle



CVO
Mini Airless Oval Bottle

CAL

Airless Bottle



CAL_01
Oval Type Bottle



CAL_02
Cylinder Type Bottle



CAL_03
Square Type Bottle



CAL_04
All PP Airless Bottle



CAL_05
All PP Airless Bottle



CAL_06
Dual Structure
Airless Bottle



CAL_07
Dual Structure
Airless Bottle



CAL_08
Sanp On Airless Bottle



CAL_09
Sanp On Airless Bottle



CAL_11
Sanp On Airless Bottle



CAL_12
All PP Airless Bottle



CAL_13
All PP Airless Bottle



CAL_14
Cylinder Type Bottle



CAL_15
Bell Type Bottle

CAL10

Airless Tube



CAL_10
[A type]
AIRLESS TUBE



CAL_10
[B type]
AIRLESS TUBE



CAL_10
[C type]
AIRLESS TUBE



CAL_10
[D type]
AIRLESS TUBE



CAL_10
[E type 18-415]
AIRLESS TUBE



CAL_10
[E type 20-410]
AIRLESS TUBE



CAL_10
[F type]
AIRLESS TUBE

DIP TUBE

CW

Package



PA_01
Dip Tube Bottle



PA_02
Dip Tube Bottle



CW_01
Silicon Valve Cap



CW_02
Silicon Valve Cap



CW_03
Cylinder Type Bottle



CW_03 DE
Cylinder Type Bottle



CW_04
1 Inch Cap



CW_05
Blow Bottle Series



CW_06
Cream Jar



CAL_07
Double Layer Bottle



CW_08
Promtion Set



CW_09
Foam Dispenser



CW.B19 & CW.B28
Snap On Cylinder Bottle



CR_30
Double Layer

CWG

Glass Bottle



CWG_01
Glass Bottle



CWG_02
Glass Bottle



CWG_03
Glass Bottle



CWG_04
Glass Bottle



CWG_05
Mini Glass Bottle



CWG_06
Glass Bottle



DROPPER
Glass Bottle

Promotion

Mini Diptube Bottle



CE Purse
Promotion Bottle



CON Purse
Promotion Bottle



CO Purse E25J
Promotion Bottle



CO Purse E3
Promotion Bottle



CO E4J
Promotion Type



CP E4J
Promotion Bottle



KEYRING TYPE
Promotion Bottle

Mini Airless System

CV19

LOTION PUMPS ARE AVAILABLE

NECK TYPE



BOTTLE VOLUME

5ml, 10ml, 15ml

DOSAGE

50mcl, 120mcl

MATERIAL

Overcap P.P	Shoulder P.P	Bottle P.P
----------------	-----------------	---------------



Mini Airless System

CV23

LOTION PUMPS ARE AVAILABLE

NECK TYPE



BOTTLE VOLUME

3ml, 5ml, 10ml, 15ml

DOSAGE

50mcl, 120mcl

MATERIAL

Overcap P.P	Shoulder P.P	Bottle P.P PETG NEW
----------------	-----------------	----------------------------------



Mini Airless System

CVE

LOTION PUMPS ARE AVAILABLE

NECK TYPE



BOTTLE VOLUME

3ml, 5ml, 10ml, 15ml

DOSAGE

50mcl, 120mcl

MATERIAL

Overcap P.P	Shoulder P.P	Bottle P.P PETG NEW
----------------	-----------------	----------------------------------



Mini Airless System

CVE-R

LOTION PUMPS ARE AVAILABLE

NECK TYPE



BOTTLE VOLUME

3ml, 5ml, 10ml, 15ml

DOSAGE

50mcl, 120mcl

MATERIAL

Overcap P.P	Shoulder P.P	Bottle P.P PETG NEW
----------------	-----------------	----------------------------------



Mini Airless System

CVE-R2

LOTION PUMPS ARE AVAILABLE

NECK TYPE



BOTTLE VOLUME

3ml, 5ml, 10ml, 15ml

DOSAGE

50mcl, 120mcl

MATERIAL

Overcap P.P	Shoulder P.P	Bottle P.P PETG NEW
----------------	-----------------	----------------------------------



Mini Airless System

CVO

LOTION PUMPS ARE AVAILABLE

NECK TYPE



BOTTLE VOLUME

5ml, 10ml

DOSAGE

50mcl, 120mcl

MATERIAL

Overcap P.P	Shoulder P.P	Bottle P.P
----------------	-----------------	---------------



Oval Type Airless System

CAL01

SPRAY & LOTION PUMPS ARE AVAILABLE

NECK TYPE



BOTTLE VOLUME

35ml, 50ml

DOSAGE

250mcl (lotion pump)
110mcl (spray pump)

MATERIAL

Overcap ABS, SAN	Shoulder ABS	Bottle SAN(outer) P.P(inner)
---------------------	-----------------	------------------------------------

GCM1

18 - 415



Airless System

CAL02

SPRAY & LOTION PUMPS ARE AVAILABLE

NECK TYPE



BOTTLE VOLUME

15ml, 20ml, 30ml, 35ml, 50ml

DOSAGE

250mcl (lotion pump)
110mcl (spray pump)

MATERIAL

Overcap ABS, SAN	Shoulder ABS	Bottle SAN PETG NEW
---------------------	-----------------	----------------------------------

GCM1

18 - 415



Square Type Airless System

CAL03

SPRAY & LOTION PUMPS ARE AVAILABLE

NECK TYPE



BOTTLE VOLUME

35ml

DOSAGE

250mcl (lotion pump)
110mcl (spray pump)

MATERIAL

Overcap ABS, SAN	Shoulder ABS	Bottle SAN(outer) P.P(inner)
---------------------	-----------------	------------------------------------

GCM1

18 - 415



Airless System

CAL04

SPRAY & LOTION PUMPS ARE AVAILABLE

NECK TYPE



BOTTLE VOLUME

15ml, 30ml, 50ml

DOSAGE

250mcl (lotion pump)
110mcl (spray pump)

MATERIAL

Overcap P.P(ABS/SAN)	Bottle P.P
-------------------------	---------------

GCM1

18 - 415



Airless System

CAL04_A



LOTION PUMPS ARE AVAILABLE

NECK TYPE



BOTTLE VOLUME

15ml, 30ml, 50ml

DOSAGE

250mcl (lotion pump)
110mcl (spray pump)

MATERIAL

Button P.P/ABS	Shoulder P.P/ABS	Bottle P.P
-------------------	---------------------	---------------

GCM1

18 - 415



Airless System

CAL05

LOTION PUMPS ARE AVAILABLE

NECK TYPE



BOTTLE VOLUME

100ml, 150ml, 200ml

DOSAGE - CM02

500mcl (standard)
450mcl (suckback)

MATERIAL

Overcap P.P	Bottle P.P
----------------	---------------

GCM1

22-400



Airless System

CAL05_A

NEW

BOTTLE VOLUME

100ml, 150ml, 200ml

LOTION PUMPS ARE AVAILABLE

DOSAGE - CM02

500mcl (standard)
450mcl (suckback)

NECK TYPE



MATERIAL

Button P.P Shoulder P.P Bottle P.P



Dual Structure Airless System

CAL06

BOTTLE VOLUME

35ml, 50ml

LOTION PUMPS ARE AVAILABLE

DOSAGE

250mcl (lotion pump)

NECK TYPE



MATERIAL

Buttoncap SAN Shoulder ABS Bottle SAN



Dual Airless System

CAL07

BOTTLE VOLUME

15ml × 2ea

LOTION PUMPS ARE AVAILABLE

DOSAGE

50mcl, 110mcl

NECK TYPE



MATERIAL

Overcap P.P, SAN Shoulder P.P Bottle P.P, SAN(outer) P.P(inner)



Snap on Airless System

CAL08

BOTTLE VOLUME

15ml, 20ml, 30ml, 35ml, 50ml

SPRAY & LOTION PUMPS ARE AVAILABLE

DOSAGE

250mcl (lotion pump)
110mcl (spray pump)

NECK TYPE



MATERIAL

Overcap ABS, SAN Shoulder METAL (Only15ml, 20ml) Bottle SAN PETG **NEW**



Airless Tube

CAL10

SPRAY & LOTION PUMPS ARE AVAILABLE

NECK TYPE



SNAP ON

A type



Ø30



Ø35

B type



Ø25



Ø30



Ø35

C type



Ø25



Ø30



Ø35

D type



Ø25



Ø30



Ø35

F type



CV19
Ø19

SCREW NECK

E type 18-415(Ø30)



18-415 R
Ø30



18-415 R+metal
Ø30



18-415 R+metal
Ø30



18-415 R+metal
Ø30



18-415 S
Ø30



18-415 SC
Ø30



18-415 D
Ø30

E type 20-410(Ø30~35)



20-410 R
Ø30



20-410 R+metal
Ø30



20-410 S
Ø30



20-410 R+metal
Ø30



20-410 R+metal
Ø30



20-410 R+metal
Ø30



20-410 SS
Ø30



20-410 R
Ø35



20-410 R+metal
Ø35



20-410 S
Ø35



20-410 R+metal
Ø35



20-410 R+metal
Ø35



20-410 R+metal
Ø35



20-410 SS
Ø35

BOTTLE VOLUME

19mm, 25mm, 30mm, 35mm Dia

DOSAGE

110mcl(spray pump), 120mcl(Only 19mm Dia)
250mcl(lotion pump)

MATERIAL

Overcap
P,P, SAN, KR



A Ø30

A Ø35

B

C

D

E Ø25

E Ø30

F

Snap on Airless System

CAL09

SPRAY & LOTION PUMPS ARE AVAILABLE

NECK TYPE



BOTTLE VOLUME

15ml, 30ml, 50ml

DOSAGE

250mcl (lotion pump)
110mcl (spray pump)

MATERIAL

Overcap
P.P(ABS, SAN)



Bottle
P.P



Oval Type Airless System

CAL11

LOTION PUMPS ARE AVAILABLE

NECK TYPE



BOTTLE VOLUME

35ml, 50ml

DOSAGE

250mcl (lotion pump)

MATERIAL

ShoulderCap ABS Shoulder ABS Bottle SAN, P.P



Snap on Airless System

CAL12 MA&MS

LOTION PUMPS ARE AVAILABLE

NECK TYPE



BOTTLE VOLUME

30ml, 50ml, 75ml, 100ml, 150ml, 200ml

DOSAGE

500mcl

MATERIAL

Overcap P.P Shoulder P.P Bottle P.P

LOTION ACTUATOR OPTION



MS
[Standard Type]

MA
[Air cut insert Type]

OVERCAP OPTION



MO



Snap on Airless System

CAL12 MR

LOTION PUMPS ARE AVAILABLE

NECK TYPE



Snap On

BOTTLE VOLUME

30ml, 50ml, 75ml, 100ml, 150ml, 200ml

DOSAGE

500mcl

MATERIAL

Overcap P.P(MO), KR(MIO)	Shoulder P.P	Bottle P.P
--------------------------------	-----------------	---------------

LOTION ACTUATOR OPTION



MR
[Round Type]

OVERCAP OPTION



MIO



MO



Snap on Airless System

CAL13 MJ

LOTION PUMPS ARE AVAILABLE

NECK TYPE



Snap On

BOTTLE VOLUME

30ml, 50ml, 75ml, 100ml, 150ml, 200ml

DOSAGE

500mcl

MATERIAL

Overcap P.P	Shoulder P.P	Bottle P.P
----------------	-----------------	---------------

LOTION ACTUATOR OPTION



MJ
[Jar Type]

OVERCAP OPTION



MJO



Snap on Airless System

CAL13 MI

LOTION PUMPS
ARE AVAILABLE

NECK TYPE



Snap On

BOTTLE VOLUME

30ml, 50ml, 75ml, 100ml, 150ml, 200ml

DOSAGE

500mcl

MATERIAL

Overcap P.P(MO), KR(MIO)	Shoulder P.P	Bottle P.P
--------------------------------	-----------------	---------------

LOTION ACTUATOR OPTION



MI

OVERCAP OPTION



MIO



MO



Snap on Airless System

CAL14

LOTION PUMPS
ARE AVAILABLE

NECK TYPE



Snap On

BOTTLE VOLUME

30ml, 50ml

DOSAGE

250mcl

MATERIAL

Overcap KR	Shoulder P.P	Bottle PETG
---------------	-----------------	----------------



Snap on Airless System

CAL15



SPRAY & LOTION PUMPS
ARE AVAILABLE

NECK TYPE



Snap On

BOTTLE VOLUME

50ml

DOSAGE

250mcl (lotion pump)
110mcl (spray pump)

MATERIAL

Overcap SAN PETG	Shoulder ABS	Bottle PETG
Bottom cap ABS		



Oval Shape

PA01

DIP TUBE TYPE

NECK TYPE



Snap On

BOTTLE VOLUME

50ml, 100ml

DOSAGE

250mcl

MATERIAL

Overcap SAN (Only 100ml)	Shoulder ABS	Bottle P.P
--------------------------------	-----------------	---------------

NECK TYPE

SNAP ON



Oval DIP TUBE TYPE

PA02

LOTION PUMPS ARE AVAILABLE

NECK TYPE



Snap On

BOTTLE VOLUME

140ml

DOSAGE

250mcl (lotion pump)

MATERIAL

ShoulderCap ABS	Shoulder ABS	Bottle PET
--------------------	-----------------	---------------



PORTABLE PERFUME CARRIER

ATOMIZER

BOTTLE VOLUME

5ml, 7ml, 10ml, 15ml, 20ml

DOSAGE

35ml, 50ml, 80mcl



SILICON VALVE CAP(EZ-1) US Patent

CW01

SIMPLE USAGE
You can control the amount of content freely by simple hand squeeze.

NECK TYPE



Snap On

BOTTLE VOLUME

250ml, 300ml

MATERIAL

Overcap P.P	Bottle P.P
----------------	---------------



SILICON VALVE CAP(EZ-1 & EZ-2)

CW02

SIMPLE USAGE
You can control the amount of content freely by simple hand squeeze.

NECK TYPE



Screw

BOTTLE VOLUME

250ml

GCM1

28-400

MATERIAL

Overcap P.P Bottle P.P



CYLINDER SET(DIP TUBE)

CW03

SPRAY & LOTION PUMPS ARE AVAILABLE

NECK TYPE



Screw

BOTTLE VOLUME

30ml, 50ml, 100ml

GCM1

18 - 415 (30ML)
20 - 410 (100ML)

DOSAGE

80mcl, 110mcl, 150mcl, 170mcl, 200mcl (SPRAY)
150mcl, 200mcl, 250mcl (LOTION)

MATERIAL

Overcap SAN,KR, P.P(Only 100ML) Shoulder ABS Bottle PET



CYLINDER SET(DIP TUBE)

CW03-DE

SPRAY & LOTION PUMPS ARE AVAILABLE

NECK TYPE



Screw

BOTTLE VOLUME

100ml

DOSAGE

110mcl, 150mcl, 200mcl (SPRAY)
150mcl, 200mcl (LOTION)

MATERIAL

Overcap SAN,KR,P.P Bottle PET GCM1 20 - 410



1 INCH CAP(DIP TUBE)

CW04

SPRAY & LOTION PUMPS ARE AVAILABLE

NECK TYPE



Screw Snap On

BOTTLE VOLUME

100ml, 130ml (Screw) ^{NEW}
120ml, 130ml, 140ml,
150ml, 160ml (Snap On)

DOSAGE

lotion pumps-150mcl, 200mcl, 250mcl
spray pumps- 80mcl, 110mcl, 150mcl,
170mcl, 200mcl

MATERIAL

Overcap KR, P.P Bottle PET



BLOW BOTTLE SERIES

CW05

High quality plastic bottles for cosmetics, household products. Each plastic bottle can be produced in transparent and colored. Various sizes are available.

NECK TYPE



Screw



MODEL	CU_6	CU_7	CU_12	CU_S9	CU_27	CU_26	CU_25	CT_D1	CT_D2	CT_D3	CU_6	CU_S2	CU_S3	CU_19
VOLUME	70ml	100ml	150ml	250ml	300ml	500ml	750ml	110ml	200ml	200ml	70ml	100ml	150ml	300ml
DIAMETER	36	41	44	55	60	71	75	40	53	50	36	41	46	52

CREAM JAR

CW06

High quality acrylic lotion jar can be produced in transparent and colored.



DOUBLE LAYER

CW07

SPRAY & LOTION PUMPS

NECK TYPE



BOTTLE VOLUME

20ml, 30ml, 50ml, 120ml

DOSAGE

110mcl,150mcl, 200mcl (SPRAY)
150mcl, 200mcl, 250mcl(LOTION)

GCM1

20 - 410

MATERIAL

Overcap SAN,KR, ABS	Shoulder ABS	Bottle SAN(outer) PET(inner)
---------------------------	-----------------	------------------------------------



PROMOTION SET

CW08

SPRAY & LOTION PUMPS

NECK TYPE



BOTTLE VOLUME

1.5ml, 2.2ml, 2.5ml, 3.0ml(Glass bottle)

DOSAGE

50mcl

MATERIAL

Overcap P,P	Shoulder P,P	Bottle P,P, GLASS
----------------	-----------------	----------------------



FOAM DISPENSER
(CHEMICAL RESISTANT, OUTER SPRING)

CW09

Plastic ball valve and outer spring not in contact with liquid contents.

NECK TYPE



BOTTLE VOLUME

100ml, 160ml, 200ml

DOSAGE

550mcl

MATERIAL

Overcap P,P	Shoulder P,P	Bottle PET
----------------	-----------------	---------------



SNAP ON CYLINDER SET(DIP TUBE)

CWB19 CWB28

SPRAY & LOTION PUMPS
ARE AVAILABLE

NECK TYPE



BOTTLE VOLUME

50ml, 120ml

DOSAGE

200mcl(spray pump)
500mcl(lotion pump)

MATERIAL

Overcap P,P	Bottle PETG
----------------	----------------



PORTABLE CARRIER

CR30

SPRAY & LOTION PUMPS

NECK TYPE



Screw

BOTTLE VOLUME

30ml

DOSAGE

80mcl(lotion pump)
35mcl(spray pump)

MATERIAL

Button P.P Bottle P.C(outer), P.E(inner)



GLASS BOTTLE (ET BUTTON)

CWG01

SPRAY & LOTION PUMPS ARE AVAILABLE

NECK TYPE



Screw

BOTTLE VOLUME

50ml(J), 50ml(E), 150ml

GCM I

24- 410

DOSAGE

250mcl

MATERIAL

Overcap KR, SAN Bottle Glass



GLASS BOTTLE (ET BUTTON)

CWG02

SPRAY & LOTION PUMPS ARE AVAILABLE

NECK TYPE



Screw

BOTTLE VOLUME

50ml(J), 50ml(E), 150ml

GCM I

24- 410

DOSAGE

250mcl

MATERIAL

Overcap KR, SAN Bottle Glass



GLASS BOTTLE (ET BUTTON)

CWG03

SPRAY & LOTION PUMPS ARE AVAILABLE

NECK TYPE



Screw

BOTTLE VOLUME

50ml(J), 50ml(E), 150ml

GCM I

24- 410

DOSAGE

250mcl

MATERIAL

Overcap KR, SAN Bottle Glass



GLASS BOTTLE

CWVG04

SPRAY PUMPS ARE AVAILABLE

NECK TYPE



BOTTLE VOLUME

30ml, 50ml

DOSAGE

80mcl

MATERIAL

Overcap
SURLYN



MINI GLASS BOTTLE

CWVG05

SPRAY PUMPS ARE AVAILABLE

NECK TYPE



BOTTLE VOLUME

5ml, 10ml, 11ml, 12ml

GCM1

13 - 415

DOSAGE

50mcl

MATERIAL

Overcap
P,P

Bottle
GLASS



GLASS BOTTLE (SNAP ON TYPE & SCREW TYPE)

CWVG06

LOTION PUMPS ARE AVAILABLE

NECK TYPE



BOTTLE VOLUME

30ml

DOSAGE

250ml

MATERIAL

Overcap P,P, PCTA Shoulder P,P Bottle GLASS



DROPPER

NECK TYPE



BOTTLE VOLUME

5ml, 10ml, 20ml, 30ml, 50ml, 100ml

GCM1

18 - 410, 20 - 410



PROMOTION SET

CV19 Purse

LOTION PUMPS
ARE AVAILABLE

NECK TYPE



Snap On

BOTTLE VOLUME

10ml

DOSAGE

50ml, 120mcl

MATERIAL

Overcap P.P	Shoulder P.P	Bottle PET
----------------	-----------------	---------------



PROMOTION SET

CE Purse

LOTION PUMPS
ARE AVAILABLE

NECK TYPE



Snap On

BOTTLE VOLUME

3ml, 5ml, 9ml

DOSAGE

200mcl

MATERIAL

Overcap P.P	Shoulder P.P	Bottle P.P
----------------	-----------------	---------------



PROMOTION SET

CON Purse

SPRAY PUMPS
ARE AVAILABLE

NECK TYPE



Snap On

BOTTLE VOLUME

3ml, 5ml, 10ml

DOSAGE

50mcl

MATERIAL

Overcap P.P	Shoulder P.P	Bottle P.P
----------------	-----------------	---------------



PROMOTION SET

CO Purse E25A

PERFUME & MOUTH SPRAY

NECK TYPE



Screw

BOTTLE VOLUME

7ml, 12ml

DOSAGE

50mcl

MATERIAL

Overcap P.P	Bottle PET, GLASS
----------------	----------------------



PROMOTION SET

CO Purse E3

PERFUME SPRAY

NECK TYPE



Screw

BOTTLE VOLUME

3ml, 5ml, 7ml, 12ml

DOSAGE

50mcl

MATERIAL

Overcap
P.P, METAL

Bottle
GLASS



GLASS BOTTLE (PERFUME SPRAY)

COE4J

SPRAY PUMPS
ARE AVAILABLE

NECK TYPE



Screw

BOTTLE VOLUME

10ml, 25ml

DOSAGE

50mcl

MATERIAL

Overcap METAL CLOUSER METAL Bottle GLASS



PLASTIC BOTTLE (PERFUME SPRAY)

CP E4J

SPRAY PUMPS
ARE AVAILABLE

NECK TYPE



Screw

BOTTLE VOLUME

10ml

DOSAGE

80mcl

MATERIAL

Overcap
P.P, METAL

Bottle
PET



PROMOTION SET

KEYring TYPE

SPRAY PUMPS

NECK TYPE



Screw

BOTTLE VOLUME

4ml

DOSAGE

50mcl

MATERIAL

Overcap
P.P

Bottle
P.P (TYPE_A),
GLASS (TYPE_B)



DISPENSER & PUMP & CAP

LOW PROFILE, PRE-COMPRESSED, MINI PERFUME,

CP1,2,3	(LOW PROFILE, PRE-COMPRESSED)
CO	(NEW MINI PERFUME & MOUTH SPRAY PUMP)

FINE MIST SPRAY PUMP

CC2	(FINE MIST SPRAY PUMP, PRE-COMPRESSED)
CC3	(GEL SPRAY PUMP, FOR HIGH VISCOSITY)
CC4	(FINE MIST SPRAY PUMP)
CC5	(FINE MIST SPRAY PUMP)
CC6	(MINI TRIGGER SPRAYER APPLIED FINE MIST)

LOTION PUMPS

CE2	(HIGH VISCOSITY CREAM)
CE3	(ESSENCE DROP DISPENSER)

DISPENSER

CQ	(DOWN LOCK SYSTEM, PLASTIC SPRING BALL CHEMICAL RESISTANT)
CQN	(DOWN LOCK SYSTEM, PLASTIC SPRING BALL CHEMICAL RESISTANT)
CQF	(DOWN LOCK SYSTEM, PLASTIC SPRING BALL CHEMICAL RESISTANT)
CQS	(DOWN LOCK SYSTEM, PLASTIC SPRING BALL CHEMICAL RESISTANT)
CB	(DOWN LOCK SYSTEM, PLASTIC SPRING BALL CHEMICAL RESISTANT)
CBN	(DOWN LOCK SYSTEM, PLASTIC SPRING BALL CHEMICAL RESISTANT)
CQN	(DOWN LOCK SYSTEM, PLASTIC SPRING BALL CHEMICAL RESISTANT)
CMQ	(UP LOCK SYSTEM, 1CC)
CM2	(UP LOCK SYSTEM, STANDARD, SUCKBACK, FOR OIL, OIL PUMP WITH SUCKBACK)
CM3	(UP LOCK SYSTEM, STANDARD, SUCKBACK, FOR OIL, OIL PUMP WITH SUCKBACK)

CAP

CAST	(HINGED FOR BOTTLE)
CWDT	(DISC-BUILT ON TOP PRESS)
CATT	(HINGED FOR TUBES)
EZ	(EASY SQUEEZE VALVE TECHNIQUE)

CP 01,02,03

Perfume Spray, New Low Profil,
Pre-compressed

US Patent

DOSAGE

80mcl

APPLICATION

Perfume

CLOSURE TYPE

S(small), M(middle), L(large)

CRIMP(Ferrule)

φ 13, φ 15, φ 18, φ 20, Europa - E4, E5

GCM1

18-410, 20-400, 20-410, 20-415 Aluminum / 15-415

INFORMATION

Plastic or Aluminum Actuator, Aluminum Ferrule,
Aluminum Sheath Closure.

CRIMP(Ferrule)

φ 13



Gold

φ 15



Gold



Silver



Crimpless

φ 18



Gold

φ 20



Gold

SCREW NECK (GCM1)

E4



E4



E4+Embo



E4J

E5



E5

15-415



15-415

18-410



18-410
Cliplock

20-400
~20-410



20-400
Cliplock



20-410
Cliplock

CO

New Mini perfume & Mouth Spray Pump

US Patent

DOSAGE

35mcl, 50mcl

APPLICATION

Perfume, Mouth Spray Pump

CRIMP(Ferrule)

φ 13, φ 15, φ 18, φ 20, Europa - E25, E3, E4

GCM1

18-410, 20-400, 20-410, 20-415 Aluminum / 13-415, 15-415

INFORMATION

Plastic or Aluminum Actuator, Aluminum Ferrule,
Aluminum Sheath Closure.

CRIMP NECK (FERRULE)

φ 13



Gold

φ 15



Gold



Silver



Crimpless

φ 18



Gold

φ 20



Gold

SCREW NECK (GCM1)

13-415



13-415

15-415



15-415

18-410



18-410
Cliplock

20-410



20-410

SCREW NECK (GCM1)

E25



A



J



J+metal

E3



E3

E4



E4



E4+Embo



20-410+metal

S.O



28-410



28-410+metal

CC02

Fine Mist Spray Pump,
Pre-compressed

DOSAGE

80mcl (facial), 170mcl, 190mcl

APPLICATION

skin, toner, make-up base,
mist

CLOSURE TYPE

R (Ribbed closure), S (Straight Closure),
SS(Smooth straight Closure), RV

GCM1

18-415, 20-410, 20-413, 22-415, 24-410

INFORMATION

Aluminum sheath closure, 360 Spray Pump Available

ACTUATOR OPTION



SCREW NECK
(GCM1)

18-415



18-415
R



18-415
R+metal_1



18-415
nozzle_3 R



18-415
nozzle_3 R+metal



18-415
nozzle_5 R



18-415
nozzle_5 R+metal



18-415
nozzle_7 R



18-415
nozzle_7 R+metal

20-410



20-410
R



20-410
R+metal_1



20-410
S



20-410
R+metal_2



20-410
SS



20-410
nozzle_3 R



20-410
nozzle_3 R+metal



20-410
nozzle_5 R



20-410
nozzle_5 R+metal



20-410
nozzle_7 R



20-410
nozzle_7 R+metal

20-413



20-413
R



20-413
R+metal



20-413
S

22-415



22-415
R



22-415
R+metal

24-410



24-410
R



24-410
R+metal



24-410
RV



24-410
R+metal



24-410
S



24-410
R+metal_2



24-410
R+metal_3



24-410
RV



24-410
R+metal



24-410
S



24-410
nozzle_3 R



24-410
nozzle_3 R+metal



24-410
nozzle_7 R



24-410
nozzle_7 R+metal

CC03

Gel Spray Pump,
For High Viscosity

DOSAGE

150mcl, 200mcl

APPLICATION

skin, toner, make-up base,
mist

CLOSURE TYPE

R (Ribbed closure), S (Straight Closure),
SS(Smooth straight Closure)
D(Double layer Closure)

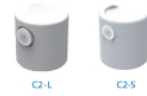
GCM1

18-400, 18-415, 20-410, 20-413, 24-410

INFORMATION

Aluminum Sheath Closure, Plastic/Aluminum Sheath Actuator,
Aluminum Ferrule Available

ACTUATOR OPTION



SCREW NECK (GCM1)

18-410
~415



18-410
S



18-415
R



18-415
R+metal



18-415
S

CRIMP NECK (Ferrule)



CRIMP (Ferrule)
Φ15



CRIMP (Ferrule)
Φ18



CRIMP (Ferrule)
Φ20

20-410
~413



20-410
R



20-410
R+metal_1



20-410
S



20-410
R+metal_2



20-410
R+metal_3



20-410
SS



20-413
R



20-413
R+metal



20-413
SS

24-410



24-410
R



24-410
S



24-410
S+metal



24-410
S



24-410
S+metal



24-410
DE



DE actuator is available only for 24-410 DE

CC04

US Patent

Fine Mist Spray Pump (US Patent)

DOSAGE

110mcl

APPLICATION

skin, toner, make-up base,
mist

CLOSURE TYPE

R (Ribbed closure), S (Straight Closure),
SS(Smooth straight Closure),
D(Double layer Closure), DE

GCM1

18-410, 18-415, 20-410, 20-413, 24-410

INFORMATION

Aluminum Sheath Closure, Plastic/Aluminum Actuator.

ACTUATOR OPTION



SCREW NECK (GCM1)

18-410
~415



18-410
S



18-415
R



18-415
R+metal



18-415
S



18-415
R+metal



18-415
R+SC

20-410
~413



20-410
R



20-410
R+metal_1



20-410
S



20-410
R+metal_2



20-410
R+metal_3



20-410
SS



20-413
R



20-413
R+metal



20-413
SS

24-410



24-410
R



24-410
S



24-410
S+metal



24-410
S



24-410
S+metal



24-410
DE



DE actuator is available only for 24-410 DE

CC05

US Patent

Fine Mist Spray Pump (US Patent)

DOSAGE

200mcl

APPLICATION

skin, toner, make-up base, mist

CLOSURE TYPE

R (Ribbed closure)
S (Straight Closure),

GCM1

20-410, 22-415, 24-410

INFORMATION

Aluminum Sheath Closure.

ACTUATOR OPTION



SCREW NECK
(GCM1)

20-410



20-410
R



20-410
R+metal_1



20-410
S



20-410
R+metal_2

22-415



22-415
R



22-415
R+metal

24-410



24-410
R



24-410
R+metal



24-410
S



24-410
R+metal_2



24-410
R+metal_3

CC06

Mini Trigger sprayer applied Fine mist
(Lock on / off Function)

DOSAGE

200mcl

APPLICATION

mist, treatment, fiber deodorant

CLOSURE TYPE

R (Ribbed closure)
S (Straight Closure),

GCM1

24-410

SCREW NECK
(GCM1)

24-410



24-410

HOW TO USE

Lock on

Lock off



CE02

High Viscosity Cream, Chemical Resistant Treatment Pumps

DOSAGE

250mcl (lotion pumps)

APPLICATION

lotion, cream, make-up base, foundation treatment

CLOSURE TYPE

R (Ribbed closure), S (Straight Closure), SS(Smooth straight Closure), D(Double layer Closure)

GCM1

18-400, 18-410, 18-415, 20-410, 10-413, 22-415, 24-410

INFORMATION

Aluminum sheath closure, Plastic/Aluminum Actuator, Aluminum Ferrule Available. No ball valve System, Outer / Wider Smoother Spring

ACTUATOR OPTION



SCREW NECK (GCM1)

18-400
~410



18-400
D



18-410
DD



18-410
S



18-410
S+metal



ED actuator is only for 18-400D, 18-410DD, 18-410 DD+M

18-415



18-415
R



18-415
R+metal_1



18-415
S



18-415
R+metal_2



18-415
R+metal_2



18-415
SC



18-415
D

20-410



20-410
R



20-410
R+metal_1



20-410
S



20-410
R+metal_2



20-410
R+metal_2



20-410
R+metal_3



20-410
R+metal_4



20-410
SS

20-413



20-413
R



20-413
R+metal



20-413
SC



20-413
SC+metal



20-413
SS

22-415



22-415
R



22-415
R+metal

24-410



24-410
R



24-410
R+metal_1



24-410
S



24-410
S+metal



24-410
R+metal_2



24-410
S+metal_3



24-410
S



24-410
S+metal



24-410
ET



ET actuator is available only for 24-410 ET

CE03

Essence Drop Dispenser

DOSAGE

150mcl, 200mcl

APPLICATION

lotion, cream, make-up base, foundation treatment

CLOSURE TYPE

R (Ribbed closure), S (Straight Closure), SS(Smooth straight Closure), SC (Aluminum sheath closure), DE

GCM1

18-415, 20-410, 20-413, 24-410

INFORMATION

Aluminum sheath closure, Plastic/Aluminum Actuator, Aluminum Ferrule Available.

ACTUATOR OPTION



SCREW NECK (GCM1)

18-415



18-415 R



18-415 R+metal_1



18-415 S



18-415 R+metal_2



18-415 SC



18-415 SC+metal

20-410



20-410 R



20-410 R+metal_1



20-410 S



20-410 R+metal_2



20-410 R+metal_3



20-410 SS

20-413



20-413 R



20-413 R+metal



20-413 SC



20-413 SC+metal



20-413 SS

24-410



24-410 R



24-410 R+metal



24-410 S_1



24-410 S+metal



24-410 S_2



24-410 S+metal



24-410 DE



DE actuator is available only for 24-410 DE

CRIMP NECK (Ferrule)



CRIMP (Ferrule) Φ15



CRIMP (Ferrule) Φ18



CRIMP (Ferrule) Φ20

DISPENSER

Down Lock System, Plastic Spring Ball Chemical Resistant

DOSAGE

500mcl, 1cc, 2cc, 3cc, 3.5cc

APPLICATION

Shampoo, Rinse, Body Wash, Gel, etc
Hand & Body Cream, Hair Care Lotion, Oil

CLOSURE TYPE

R (Ribbed closure), S (Straight Closure),
D(Double layer Closure), SS(Smooth straight Closure)

GCM

22-400, 24-410, 28-400, 28-410, 33-410

INFORMATION

Aluminum Sheath Closure,
Smooth Closure. Double Layered Closure Available.
Various kinds of Actuators can be used with any other closures.

CQ (1CC, 2CC, 3CC) SCREW NECK (GCM)

24-410



24-410
R



24-410
R+metal



24-410
D



24-410
S

28-400
~28-410



28-400
R



28-400
R+metal



28-400
D



28-410
R



28-410
R+metal



28-410
S

33-410



33-410
R



33-410
R+metal



33-410
S

CQF (1CC, 2CC, 3CC) SCREW NECK (GCM)

24-410



24-410
R



24-410
R+metal



24-410
S



24-410
D

28-410



28-410
R



28-410
R+metal



28-410
S

33-410



33-410
R



33-410
R+metal



33-410
S

CQS (1CC, 2CC, 3CC) SCREW NECK (GCM)

24-410



24-410
R



24-410
R+metal



24-410
S

CQN (1CC, 2CC, 3CC) SCREW NECK (GCM)

24-410



24-410
R



24-410
R+metal



24-410
D



24-410
S

28-400
~28-410



28-400
R



28-400
R+metal



28-400
D



28-410
R



28-410
R+metal



28-410
S

33-410



33-410
R



33-410
R+metal



33-410
S

CB (3.5CC) SCREW NECK (GCM)



CBCS



CBSO



CBNR

33-410



33-410
R



33-410
R+metal

CBN (3.5CC) SCREW NECK (GCM)

33-410



33-410
R



33-410
R+metal

DISPENSER

Up Lock System, Plastic Spring Ball Chemical Resistant

DOSAGE

450mcl(Suckback), 500mcl, 1cc

APPLICATION

Hand & Body Cream, Hair Care Lotion, Oil, etc

CLOSURE TYPE

R (Ribbed closure), S (Straight Closure), SS(Smooth straight Closure)

GCM1

24-410

INFORMATION

Aluminum Sheath Closure, Smooth Closure, Double Layered Closure Available. Various kinds of Actuators can be used with any other closures.

CMQ (1CC)

SCREW NECK (GCM1)

24-410



24-410R



24-410 R +metal(1)



24-410 R +metal(2)



24-410 SS



24-410 S

CM2 (500mcl)

SCREW NECK (GCM1)

STANDARD, SUCKBACK, OIL, OIL SUCKBACK

22-400 ~24-410



22-400 SS



22-400S



24-410 SS



BUTTONCAP

CM3 (500mcl)

SCREW NECK (GCM1)

STANDARD, SUCKBACK, OIL, OIL SUCKBACK

24-410



24-410 S

CMO (500mcl)

SCREW NECK (GCM1)

STANDARD, SUCKBACK, OIL, OIL SUCKBACK

24-410



STANDARD



SUCKBACK



OIL



OIL_SUCKBACK

CMO (1CC)

SCREW NECK (GCM1)

24-410



OIL2

CLOSURE

HOLE SIZE(INCH)

0.062, 0.125, 0.190, 0.250, 0.330

APPLICATION

Shampoo, Rinse, Body Wash,
Hand Cream, Gel, etc

GCM

15-415, 20-415, 24-410, 24-415, 28-410

CAST

Hinged for Bottle

SCREW NECK
(GCM)

15-415
~20-415



15-415
(0.125)



20-415
(0.062, 0.125, 0.250)

24-410



24-410
(0.062, 0.125, 0.250)



24-410 + LEAF
(0.062, 0.125, 0.250)

24-415



24-415
(0.062, 0.125, 0.250)

28-410



28-410
(0.062, 0.125, 0.250)

CWDT

Disc-built on top to press

SCREW NECK
(GCM)

20-410



20-410



20-410+metal

24-410



24-410



24-410+metal

24-415



24-415



24-415+metal

28-410



28-410



28-410+metal

CATT

Hinged for tube

SCREW NECK
(GCM)

Ø 35



35
(0.125, 0.250)

Ø 40



40
(0.125, 0.250, 0.330)



40TH
(0.330)

Ø 45



45
(0.125, 0.190, 0.250)

Ø 50



50
(0.125, 0.190, 0.250)

EZ

Easy Squeeze Valve Technique(US Patent)

SCREW NECK
(GCM)

28-400



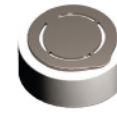
28-400
Closure

Overcap



Overcap

Sealed
Cap



Sealed
Cap

EZ03 Ø 50
24-400





CHONGWOO CO.,LTD.

673-57, GYEONGSEO-DONG, SEO-GU, INCHEON, KOREA (ZIP: 22756)
(ROBOT LAND-RO 249BEON-GIL 114-22)
REP. TEL : +82 - 32 - 812 - 2009 FAX : +82 - 32 - 813 - 0779 E-mail : info@chongwoo.com

CHONGWOO AMERICA LTD.

2821 N. OCEAN BOULEVARD, STE. 508, FT.LAUDERDALE, FL 33308, USA
TEL : +1-646-414-6766 FAX : +1-917-591-8992 E-mail : claudioarena@chongwoo.com

SHANGHAI CHONG WOO PLASTIC PACKAGES CO. LTD., CHINA

上海钟宇塑料包装制品有限公司 上海市松江区车墩镇车阳路329号6幢楼
#329 CHEYANG RD CHEDUNZHEN, SONGJIANG SHANGHAI, CHINA.
TEL : +86-21-67740571 FAX : +86-21-67742927 MOBILE : +86-15000057905 QQ : 1376649329 E-mail : sh2@chongwoo.com

WEIHAI CHONGWOO CO., LTD. CHINA

威海钟宇塑料制品有限公司 威海市经济技术开发区 泊于工业园西昌路
XIJING RD, POYU INDUSTRIAL PARK, WEIHAI, CHINA
TEL : +86-631-3630123 FAX : +86-631-3630770 MOBILE : +86-13336301141 E-mail : weihai1@chongwoo.com

CW PACKAGE INC JAPAN

TEL : +81-3-3226-3228 FAX : +81-3-3226-3229